

Ti-Max

SOLID TITANIUM

Brushless Electric Micromotor System



NSK



BRASSELER USA®
DENTAL INSTRUMENTATION

nano 400™ *The Next Generation in Electric Micromotors*

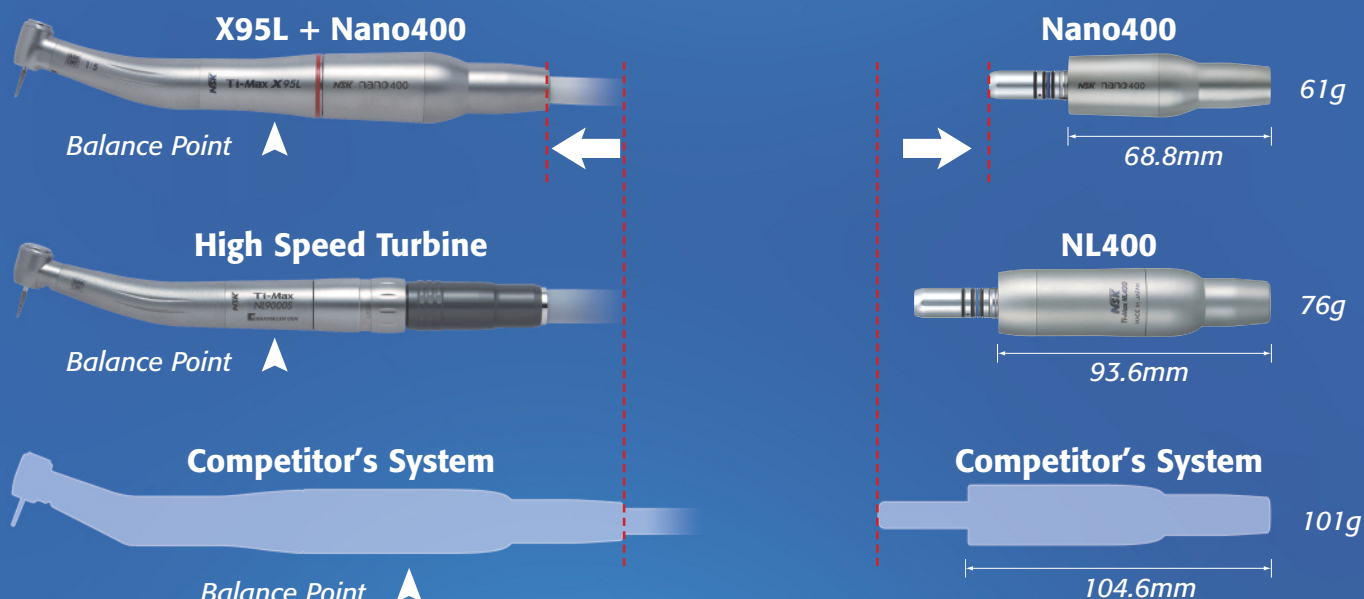
The innovative Nano400 brushless micromotor combines user-friendly ergonomic design with lightweight titanium. Innovative technology is built-in throughout the Nano400 system, including the lightest motor in its class, delivering a strong 3.4 Ncm of high-torque power. Combined with a wide range of contra-angle attachments, the Nano400 electric system is suitable for any application and will be an outstanding addition to your practice.

Perfect Balance

The balance of the electric micromotor with attachment has been dramatically improved with the introduction of the Nano400. The overall length of the Nano400 combined with the speed increasing attachment is identical in overall length to a highspeed air handpiece with coupler. The reduction in weight and length of the Nano400 micromotor lessens hand fatigue and allows for a greater degree of control.

More Than 25% Shorter and 20% Lighter

The Nano400 has been reduced in weight by 20% and size by 25% compared to the current Brasseler USA/NSK micromotor. Despite its smaller size and lighter weight, Nano400 is more powerful and offers the same speed range as the current brushless Brasseler USA/NSK clinical micromotor.



Nano400 System	
Model	Nano400 S120 (120V)
Order Code	5019500U0

System Contents:

- Control Unit
- Motor
- Cord
- AC Adapter (120V)



Nano400 Micromotor	
Model	Nano400 Motor Only
Order Code	5019502U0

System: 180° Vector Control System

Motor: Sensorless DC Brushless Micromotor

Speed: 2,000 – 40,000 min⁻¹

Weight: 61g (micromotor only)

Torque: Max. 3.4 Ncm

Light: White LED

Warranty: 3 years

The Electric Advantage

Marginal Integrity

The high and consistent torque of the Brasseler USA/NSK electric system reduces irregular margins and ensures predictable results. The electric system's concentricity provides you with greater control over the handpiece, which results in greater marginal integrity.

Restoration Removal

The gear-to-gear design of the electric attachments reduces vibration and chatter that can be common with air turbine handpieces. When removing restorations, the electric system minimizes bur breakage, reduces chair time and lessens trauma to the patient.

Controlled Speed for Polishing

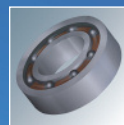
All polishers are recommended to operate at defined speeds. Electric handpieces have a consistent torque and the bur speed can easily be controlled by the control box.

Clean Head System



The NSK patented Clean Head System prevents fluid and debris from being retracted into the head of the handpiece, prolonging bearing life and enhancing infection control.

Ceramic Ball Bearings



Ceramic is 25% harder and 50% lighter than stainless steel — these features dramatically decrease bearing friction, resulting in a noticeably quieter handpiece with reduced vibration and extended bearing life.

Four Port Spray



Four port water spray effectively cools and cleans the cutting surface of the bur, ensuring optimum performance and bur longevity.

NSK Scratchless DURACOAT



DURACOAT, NSK's latest surface enhancement technology, takes advantage of the hypoallergenic & biocompatible properties of titanium to further improve durability. DURACOAT creates a smooth, scratch-proof surface that feels comfortable in the hand.

Solid Titanium Construction



Ti-Max X series handpieces offer the perfect weight and balance, resulting in a handpiece that will significantly reduce wrist and hand fatigue. The titanium construction is 30% lighter than stainless steel, yet stronger and more durable.

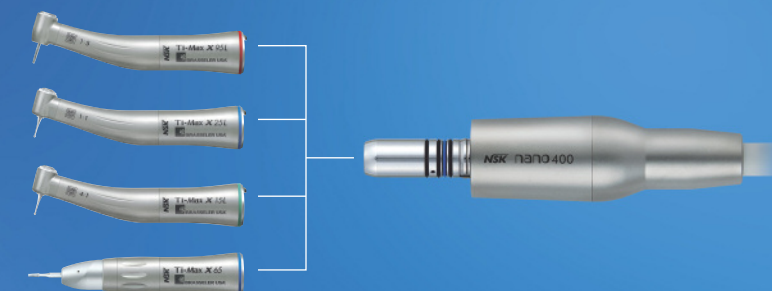


32,000* LUX of LED generates natural daylight-quality light, which assures clearer vision when compared to halogen light. LED light sources are longer-lasting and more durable than halogen bulbs, saving you money.

**Figures by NSK Laboratory*

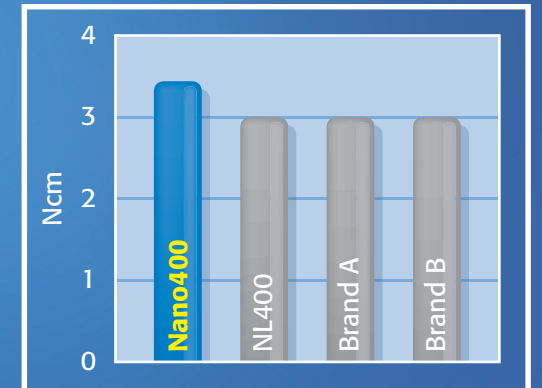
The Power of One

The Nano400 covers a wide speed range and is compatible with existing optic and non-optic attachments, allowing a speed selection of 100,000 – 200,000 min⁻¹, suitable for any application.



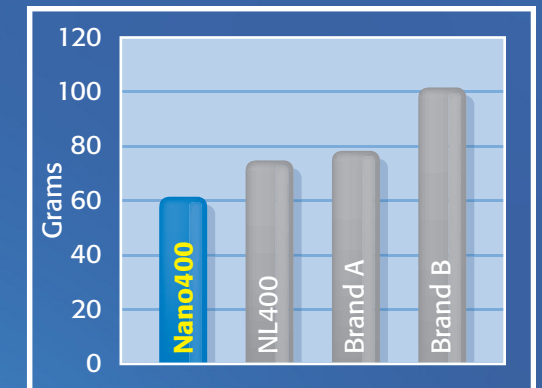
Powerful

The Nano400 micromotor outperforms leading competitors for output, delivering a strong 3.4 Ncm of high torque power.

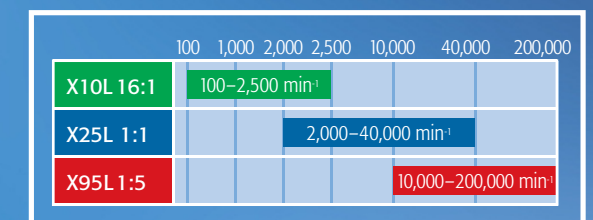


Lightweight

The Nano400 micromotor weighs a mere 61 grams – up to 40% less than competitive units – making it the lightest motor in its class.



Multiple Speed Options



NL400™ Control Unit

Easy Office Integration

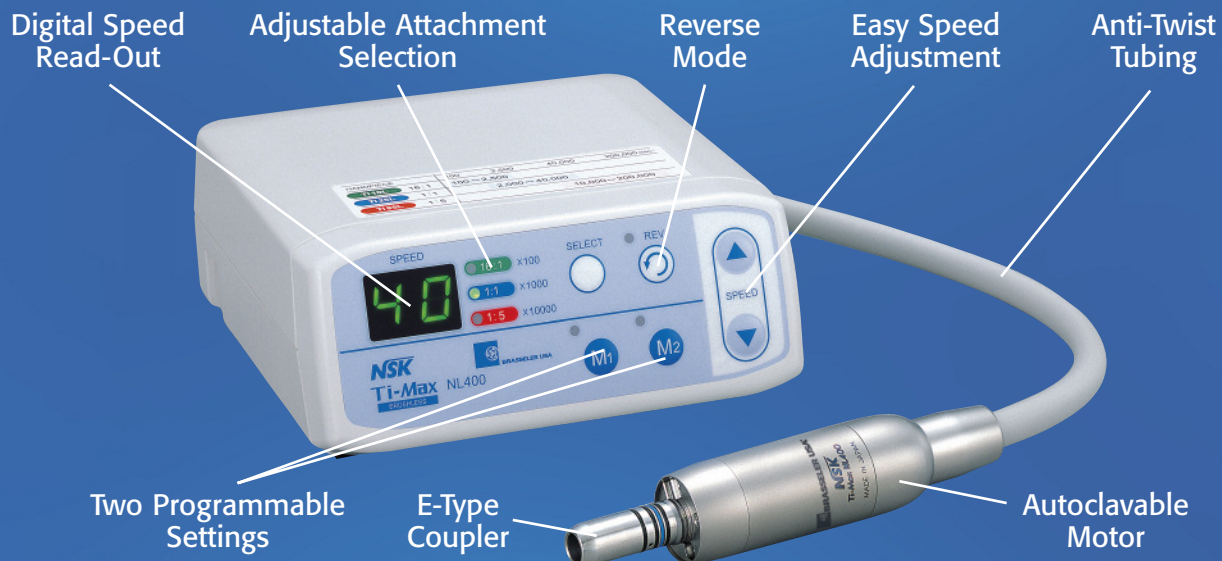
The NL400 control unit is easily integrated into your operatory. Any air powered dental unit can operate the system, which plugs directly into any 4-hole tubing, allowing the use of your existing foot control.

Wide Operating Range with Precise Control

Speeds from 2 RPM to 200,000 RPM are possible with the NL400 by utilizing one of the wide assortment of handpiece attachments available.

Precision Torque Control

Maintains a constant speed at variable working pressures, improving tactile feel and handling.



NL400 System	
Model	NL400 System
Order Code	5010296U0

System Contents:

- Control Unit
- Cord
- Motor
- AC Adapter (120V)

NL400 Continental System	
Model	NL400 System Continental
Order Code	5011525U0

System Contents:

- Control Unit
- Cord
- Motor
- AC Adapter (120V)



NL400 Integrated System	
Model	NL400
Order Code	5013504U0

System Contents:

- Control Unit
- Cord
- Motor
- AC Adapter (120V)
- Power Module



NL400 Micromotor	
Model	NL400 Motor Only
Order Code	5010628U0

Motor: Brushless Micromotor
Speed: 2,000 – 40,000 min⁻¹
Weight: 76g (micromotor only)

Torque: Max. 3.0 Ncm
Light: Halogen
Warranty: 3 years

Popular Attachments



Ti-Max X-95L

Model	C600
Order Code	5015521U0

1:5 Speed Increasing
Speed Range: 10,000-200,000 rpm
For Friction Grip Burs
Four Port Spray
Available in Optic or Non-Optic
Push Button

Common Applications:

- Bulk/gross reduction of enamel
- Margin refinement
- Contouring and shaping of composites
- Restoration removal of obsolete crowns and amalgams
- Root planning
- Endodontic access



Ti-Max X-85L

Model	C604
Order Code	5015523U0

1:5 Speed Increasing,
Speed Range: 20,000-200,000 rpm
Mini-Head
For Friction Grip Burs
Single Port Spray
Available in Optic or Non-Optic
Push Button

Common Applications:

- Improves posterior access and visibility
- Contouring and shaping of composites
- Margin refinement
- Endodontic access



Ti-Max X-25L

Model	C601
Order Code	5015525U0

1:1 Gear Ratio
Speed Range: 2,000-40,000 rpm
For Right-Angle Latch Burs
Single Port Spray
Available in Optic or Non-Optic
Push Button

Common Applications:

- Carries removal
- Intra-oral polishing of porcelain, composites and alloy
- Debonding of orthodontic adhesive



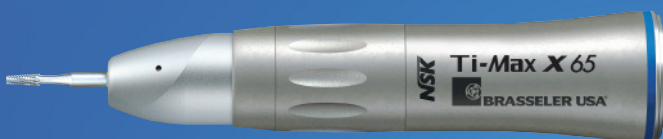
Ti-Max X-20L

Model	C605
Order Code	5015527U0

1:1 Gear Ratio
Speed Range: 2,000-40,000 rpm
For Friction Grip Burs
Single Port Spray
Available in Optic or Non-Optic
Push Button

Common Applications:

- Low speed and high torque for margin refinement
- Intra-oral polishing of porcelain, composites and alloy



Ti-Max X-65

Model	H274
Order Code	5015530U0

1:1 Gear Ratio
Speed Range: 2,000-40,000 rpm
For Straight Handpiece Burs
Single Port Spray, Internal Coolant
Available in Optic or Non-Optic
Push Button

Common Applications:

- Extra-oral polishing of porcelain, composites and alloy
- Adjustment of chrome cobalt
- Adjusting, trimming and polishing acrylic appliances



Ti-Max X-10L

Model	C603
Order Code	5015533U0

16:1 Gear Ratio
Speed Range: 100-2,500 rpm
For Right-Angle Latch Burs
Single Port Spray
Available in Optic or Non-Optic
Push Button

Common Applications:

- High torque for NiTi rotary files
- Ideal for gates glidden and post drills



Expect the Best. Buy Direct.

To order call 800.841.4522, fax 888.610.1937,
in Canada call 800.363.3838, fax 1.866.330.4454.
Visit our website: www.BrasselerUSA.com.



BRASSLER USA®
DENTAL INSTRUMENTATION